

DIE-LINE SAFETY WALKWAYS

Die-Line is a range of positive grip pressed section walkways similar to that which has been in general use in Europe for many years.

It is available in three formats:

- ❖ Die-Line Flooring Channels (Planks)
- ❖ Die-Line Walkways
- ❖ Die-Line Mats

Together with all the necessary accessories including bolts, washers, nuts, fish plates, jointing channels, saddle clamps, splice plates and mesh clips.

Advantages:

- ❖ 1. Excellent non-slip characteristics.
- ❖ 2. Ease of handling due to its light weight.
- ❖ 3. Cost saving due to economical structural support.
- ❖ 4. It is easy to erect which minimizes the need for specialised labour.
- ❖ 5. High light penetration.
- ❖ 6. Can be uncoated, bitumen dipped or galvanized.
- ❖ 7. True alignment for good appearance.
- ❖ 8. Minimal welding or clipping to supports.



DIE-LINE WALKWAY 750K



DIE-LINE MATS 750MM



DIE-LINE FLOORING CHANNELS (PLANKS)

Available in three sizes:

- ❖ 150 x 2450 (Nominal)
- ❖ 250 x 2450 (Nominal)
- ❖ 305 x 2450 (Nominal)

All 2mm thick.

Can be uncoated, galvanized or bitumen dipped.

Standard length 2450.

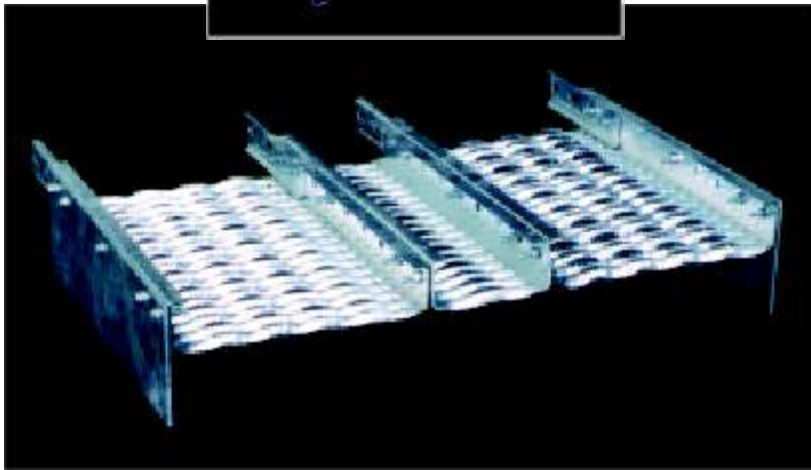
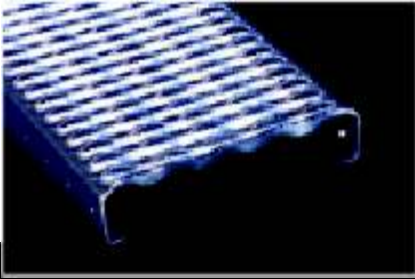
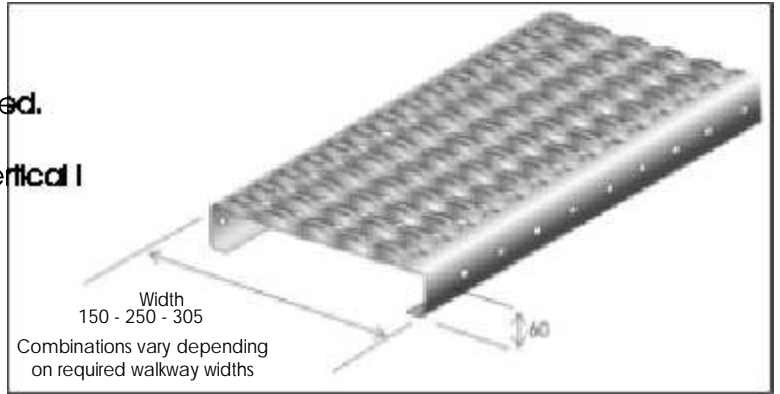
10mm diameter hole along the length in the vertical I

Kickflats are available if required

Accessories:

Fish plates

Bolts, nuts and washers



Possible Walkway Combinations

150mm	250mm	305mm	mm
	2		500
		2	610
1		2	760
	1	2	860
2		2	910
		3	915
	4		1000

- ❖ Planks can be used on their own or in various combinations to form a walkway.
- ❖ Reinforced fish plates secured to each walkway section by bolts, nuts and washers, join one section to the next.
- ❖ A 6mm thick kickflat is secured by 8mm bolts and nuts to the walkway. Thickness and height of kickflats are manufactured to customer specification.
- ❖ Walkway sections are joined laterally by 8mm bolts and nuts to form a strong 4mm thick base between sections.

Customer to specify if kickflat is required.



DIE-LINE 750K AND 500K WALKWAYS

Complete walkway sections with integral kickflats as a single unit.

Two sizes available:

- ❖ 500K (500 mm wide)
- ❖ 750K (750 mm wide)
- ❖ Standard length 2400mm nominal.
- ❖ 2,5mm thick
- ❖ 100mm Vertical upturn
- ❖ Supplied with splice plates, saddle clamps, jointing channel, bolts, nuts and washers.

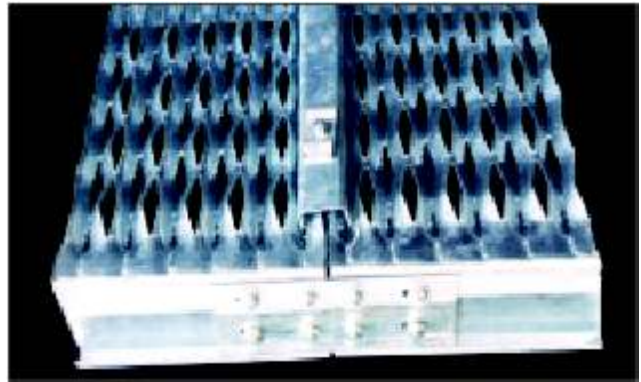
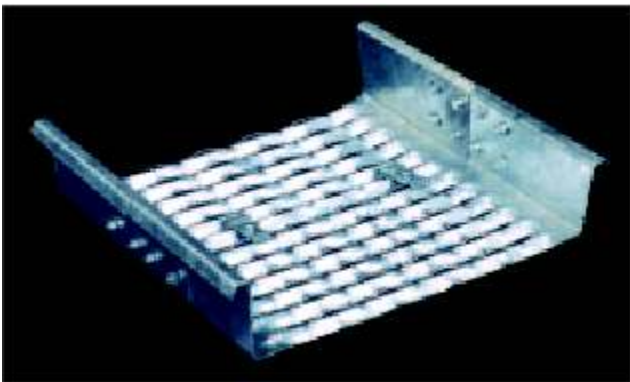
Advantages:

- ❖ Non slip.
- ❖ High strength / mass ratio.
- ❖ Long life.
- ❖ Ease of erection.

Accessories:

- ❖ Jointing channels.
- ❖ Splice plates.
- ❖ Saddle clamps.
- ❖ Bolts- nuts and washers.

NOTE: If supporting steelwork occurs at the end on **one panel**, preventing the jointing channel from joining with the **next**, the jointing channel should be fitted to the unsupported mesh to eliminate deflection there.

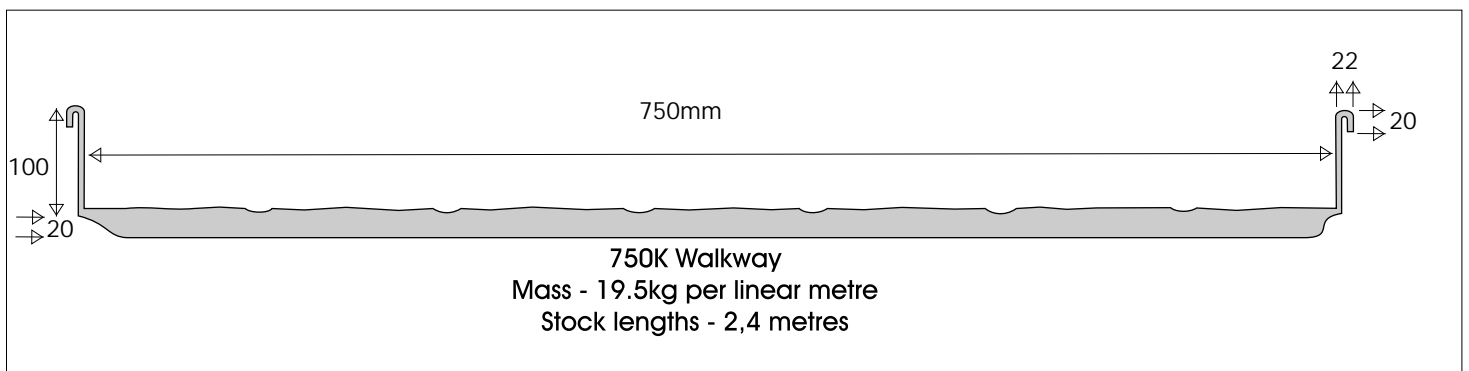
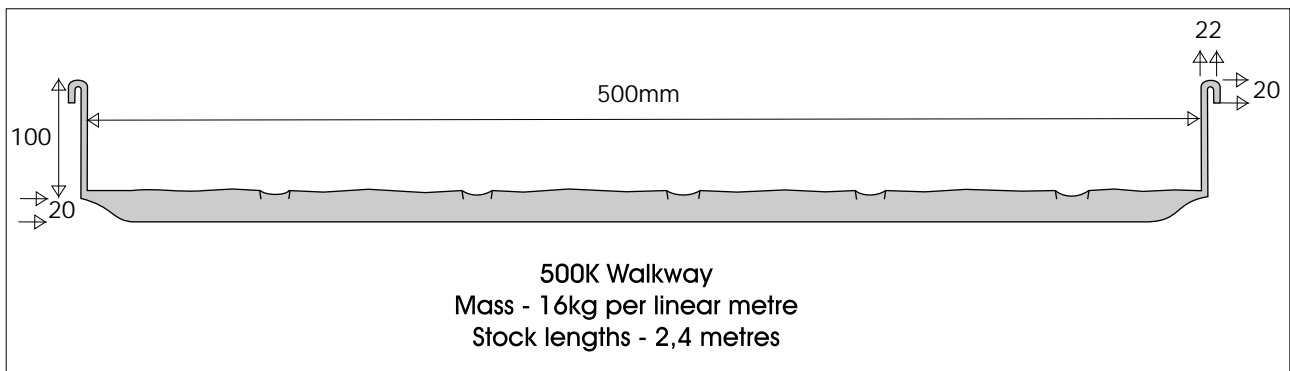


To avoid Die-Line deflection at butting ends a jointing channel is positioned across the underside of the joint. The two saddle clamps lie below the non-slip surface and are not a hazard. Nuts are pre-fixed to the jointing channel to facilitate positioning from the top of the walkway.



DIE-LINE 750K AND 500K WALKWAYS

- ☐ **Safety:** The Die-Line pattern provides superior non-slip safety.
- ☐ **High Strength / Mass Ratio:** The sections are designed for longitudinal span thus obviating unnecessary steel support and heavy kickplates resulting in better economy.
- ☐ **Splice details:** Transverse loading is transferred to the kickflats which are provided with two slotted holes at each end and positioned around the neutral axis. Pressed angle splice plates fit on the outsides and into the returned top edges. M10 bolts and nuts are provided.
- ☐ **Long Life:** Clean open sections with no welding or butting surfaces to trap corrosive elements, makes them ideal for special protective finishes.
- ☐ **Erection:** The light sections are easy and safe to erect.
- ☐ **Holding Down:** Where welding is undesirable, M hook bolts or channel bolts to suit transverse supports should be obtained 20mm longer than depth of section to keep fixing below surface. Saddle clamps are provided.





DIE-LINE - LOADING TABLES:

SAFE LOADS FOR DIE-LINE:

Die-Line Flooring Channels (Planks)							
		Span mm					
Type - Width		1000	1250	1500	1750	2000	2450
150 mm	u	1780	1140	792	580	445	285
250 mm	c	338	400	333	285	250	200
	u	1780	1140	792	580	445	285
	c	338	270	225	192	169	135
	u	1780	1140	792	580	445	285
305 mm	c	338	270	225	192	169	135

Die-Line Safety Walkways:							
		Span mm					
Type - Width		1000	1250	1500	1750	2000	2400
500 mm	u	3190	2040	1417	1040	795	510
	c	1090	870	725	620	545	435
750 mm	u	3190	2040	1417	1040	795	510
	c	1090	870	725	620	545	435

ACCESSORIES:



Splice plate



Jointing Channel



Fish Plate



Saddle Clamp



DIE-LINE - MATS:

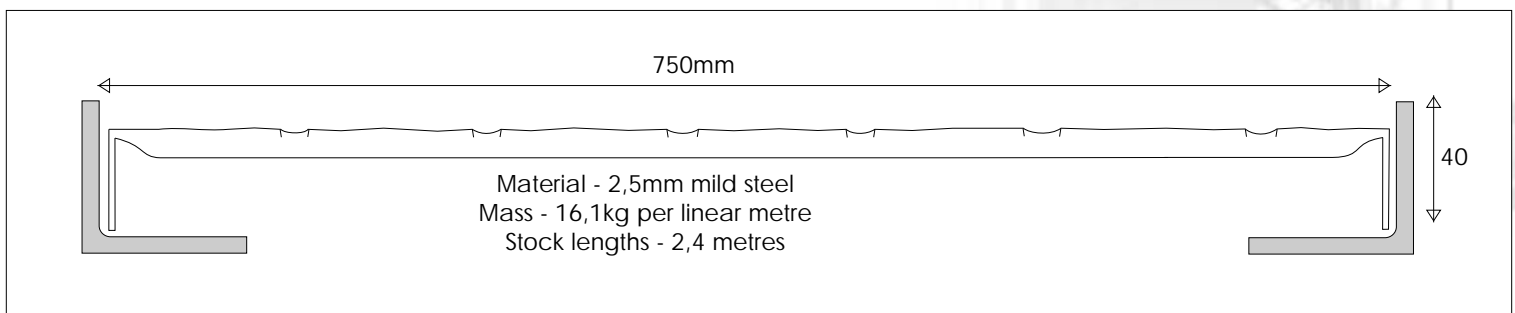
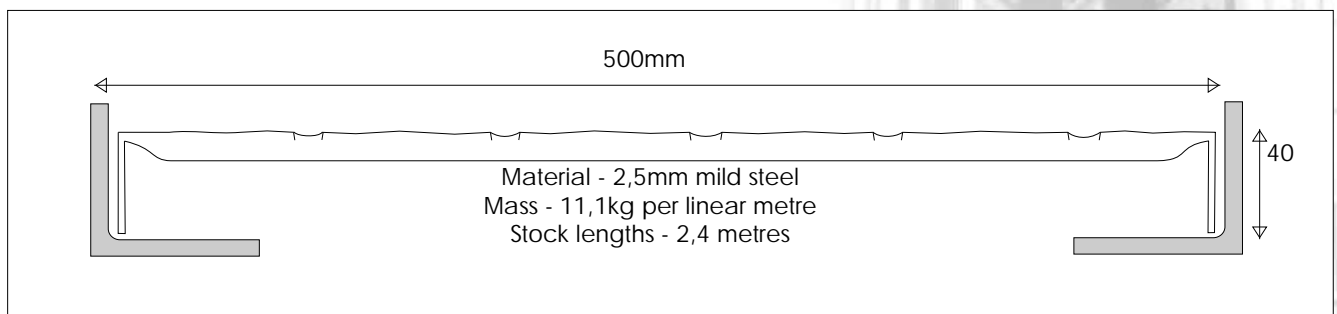
Use where steelwork design dictates the use of stringers to cover very long spans between supports.

Two sizes available:

- ❖ 500 x 2400mm (500 mm wide)
- ❖ 750 x 2400mm (750 mm wide)
- ❖ Standard length 2400mm nominal.
- ❖ Thickness 2,5mm

Advantages

- ❖ Ease of handling.
- ❖ Minimal welding or clipping to stringers.
- ❖ Low deflection.
- ❖ True alignment for good appearance.
- ❖ Clean edges are clean and safe.
- ❖ Fast erection.
- ❖ Supplied with jointing channel.



Standard downturn is 40mm, but can be manufactured to customer specification.